



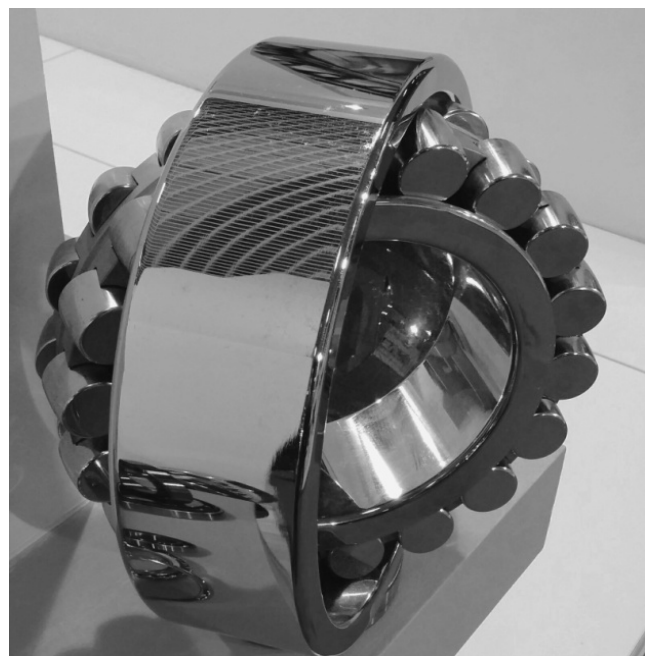
ROLLFINE is the Sweden bearing brand with high European quality standards.

We manufacture antifriction bearings with an external diameter of up to 1925 mm. In addition to standard series we also manufacture according to customer specifications in a variety of dimensions and product quantities. All products comply with the specifications set down in the DIN and/or ISO standards.

All the components from the production facilities in China make their way to the central warehouse at the ROLLFINE locations in Sweden and Middle East. Upon performing quality check right from the start, professional assembly and customer-orientated goods consignment, we then dispatch our products from here to destinations all over the world. Dispatching occurs in individual packaging, multi-piece packaging or as OEM packaging, according to customer requirements.

By combining the advantages of international procurement expertise with an efficient administrative structure we can offer you a high-quality product at a fair price.

ROLLFINE offers reliable cost effective solutions, extreme operational flexibility, leading-edge service, short delivery time and the high quality of bearing product.



## Production and Machining equipment

Applying high precision CNC machines guarantee close dimensional and geometrical tolerances plus a stable surface quality



## HEAT TREATMENT LINE

Computerized tempering and quenching processes guarantee an optimum microstructure with uniform grain structure and thus steady quality

## Bearing inspection program

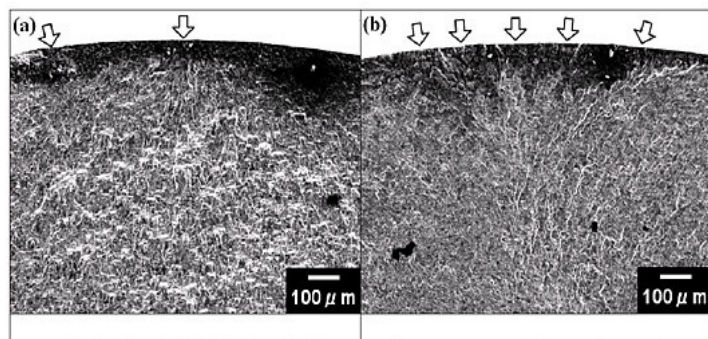
ROLLFINE has set up several specific inspection procedures for all types of bearings:

- Ultrasonic inspection
- Crack inspection
- Surface roughness
- Noise and vibration
- Dimensional and geometrical control according to DIN620
- Residual magnetism
- Visual appearance
- Coating thickness and uniformity
- functional inspection



## Material inspection

Before, during, and after manufacturing our chemical and metallurgical laboratory permanently performs quality tests.



## Packaging

### Physical protection

The bearings enclosed in special 3 layer package to protect from, among other things, mechanical shock, vibration, electrostatic discharge, compression, temperature and contamination. In order to keep the bearings away from rust and corrosion agents and ensuring no contamination or particle remains inside it after assembly process, they washed with preservation oil which is adaptive with lubricants base oils.



### ROLLFINE bearings in industrial applications

Supply bearings, necessary accessories and services to Metal, Mines, and heavy duty industries. In addition to the standardized types of rolling bearings, ROLLFINE offers series of special rolling bearings which are designed for various industrial fields.



**Contact:**

INDUSTRIAL SERVICES I STOCKHOLM AB

Öresundsvägen 14,  
227 64 Lund,  
Sweden

Tel/Fax: +46 76 034 0773  
+46 76 033 1031

Email: [info@industrialservices.se](mailto:info@industrialservices.se)



[www.rollfinebearings.se](http://www.rollfinebearings.se)